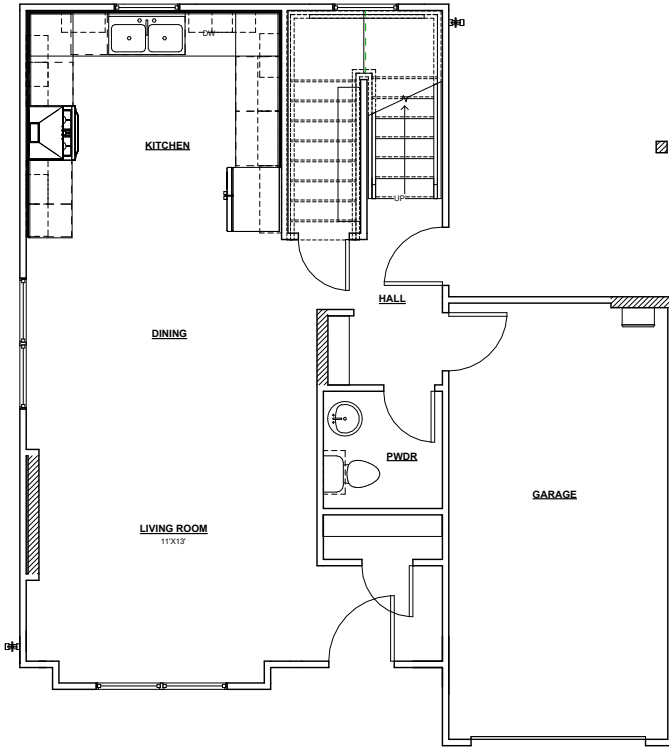


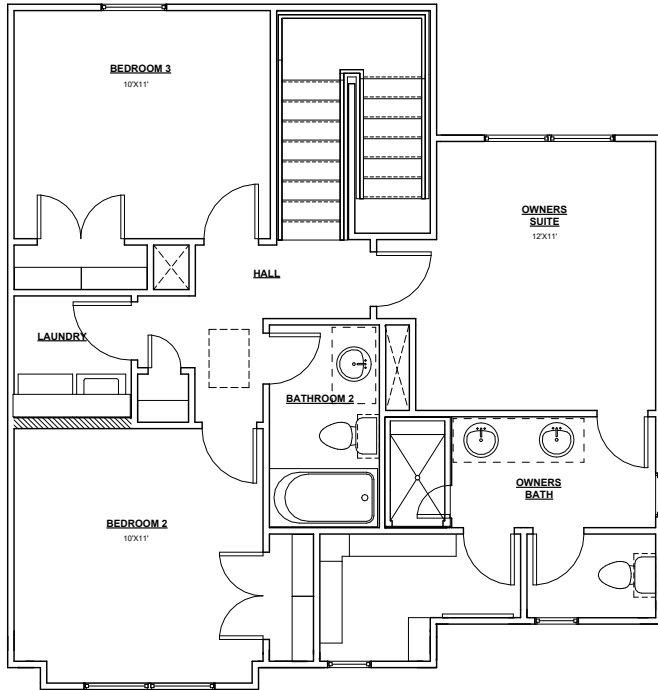
SOHO

1382 SQFT WIDTH 30'-0" DEPTH 30'-5"
3 BEDROOM / 2.5 BATHROOMS / 1 CAR GARAGE

 **TIMBERCRAFT**
HOMES
405.757.7067



FIRST FLOOR



SECOND FLOOR



CONTEMPORARY



MODERN



MODERN FARMHOUSE

PERSONALIZATION OPTIONS:
BALCONY OPTION

NOTE: ALL BACK AND SIDE MATERIAL ARE 8" JAMES HARDIE LAP SIDING.
We reserve the right to make changes or alterations with or without notice due to our continuing efforts to offer our customers the greatest range of selections. Some plans may have obvious differences. Noticeable variations may exist between floor plans. This document is intended as a guide and not as an actual representation of the home features. Ask your community manager for further details. Updated May 2023.