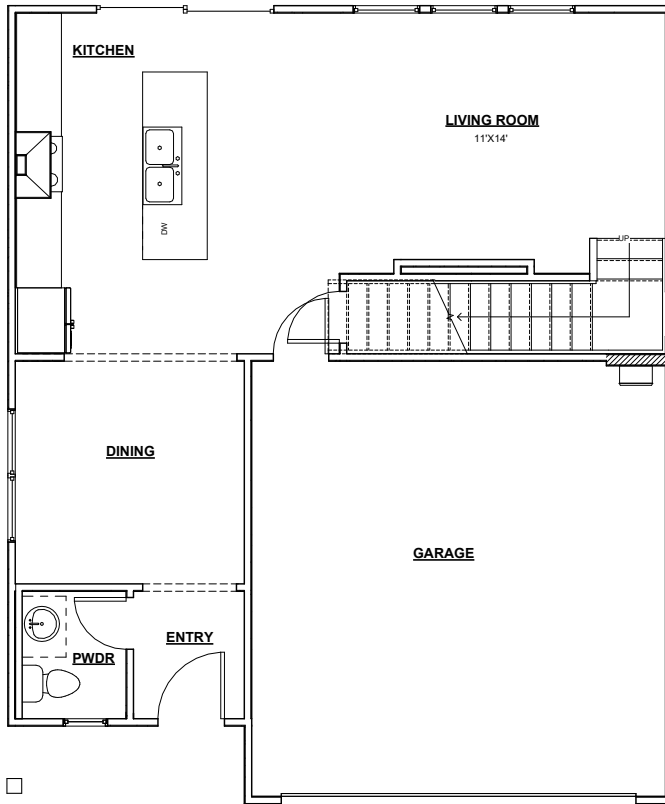


# TREMONT

1547 SQFT WIDTH 30'-0" DEPTH 36'-5"  
3 BEDROOM / 2.5 BATHROOMS / 2 CAR GARAGE



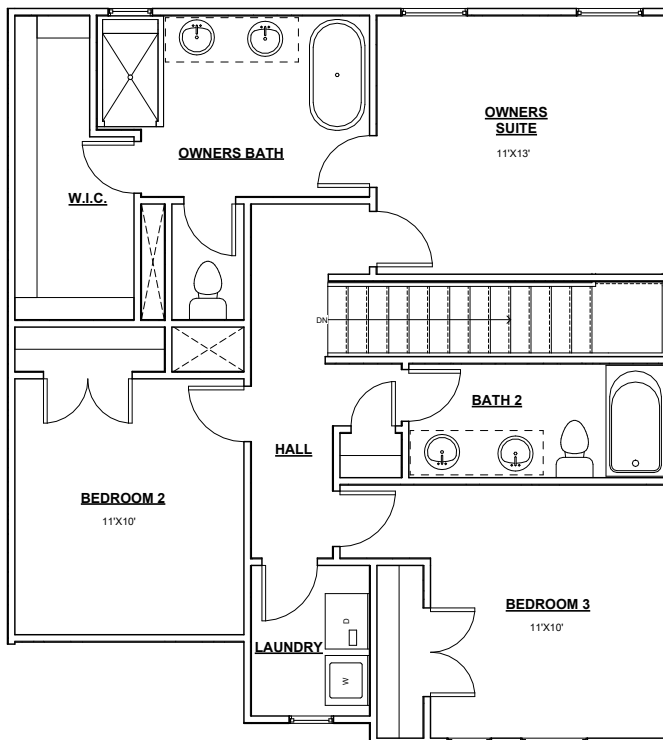
405.757.7067



**CONTEMPORARY**



**MODERN**



**MODERN FARMHOUSE**

NOTE: HOUSE SIDE MATERIAL BRICK AND / OR 8" JAMES HARDIE LAP SIDING.  
We reserve the right to make changes or alterations with or without notice due to our continuing efforts to offer our customers the greatest range of selections. Some plans may have obvious differences. Noticeable variations may exist between floor plans. This document is intended as a guide and not as an actual representation of the home features. Room dimensions are rounded. Ask your community manager for further details. Updated May 2023.