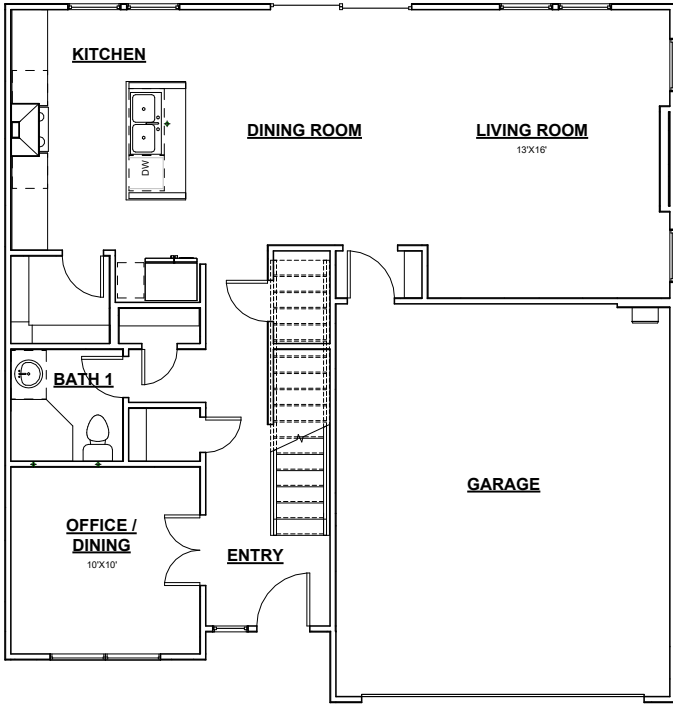


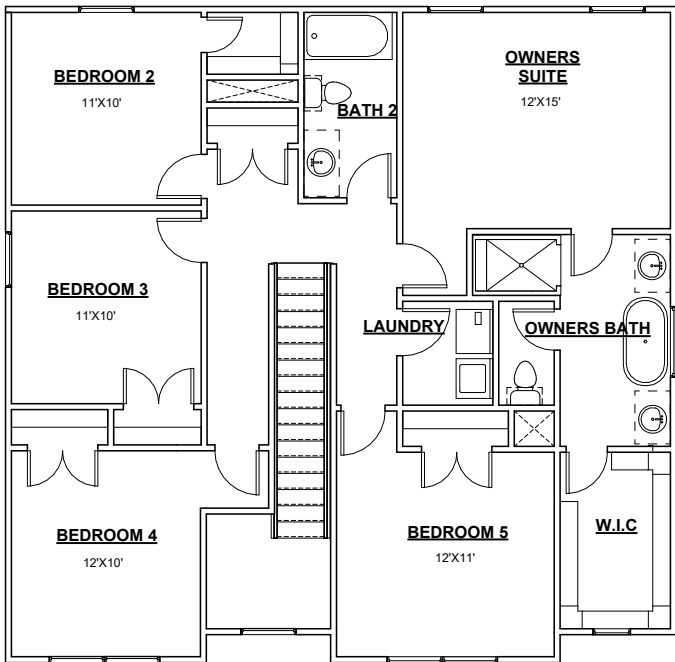
HUNTINGTON

 **TIMBERCRAFT
HOMES**
405.757.7067

2300 SQFT WIDTH 38'-0" DEPTH 40'-0"
5 BEDROOM / 3 BATHROOMS / 2 CAR GARAGE / OFFICE - DINING



FIRST FLOOR



SECOND FLOOR



CONTEMPORARY



MODERN



MODERN FARMHOUSE

PERSONALIZATION OPTIONS:
3RD CAR / 5TH BEDROOM

NOTE: HOUSE SIDE MATERIAL BRICK AND / OR 8" JAMES HARDIE LAP SIDING.
We reserve the right to make changes or alterations with or without notice due to our continuing efforts to offer our customers the greatest range of selections. Some plans may have obvious differences. Noticeable variations may exist between floor plans. This document is intended as a guide and not as an actual representation of the home features. Room dimensions are rounded. Ask your community manager for further details. Updated May 2023.