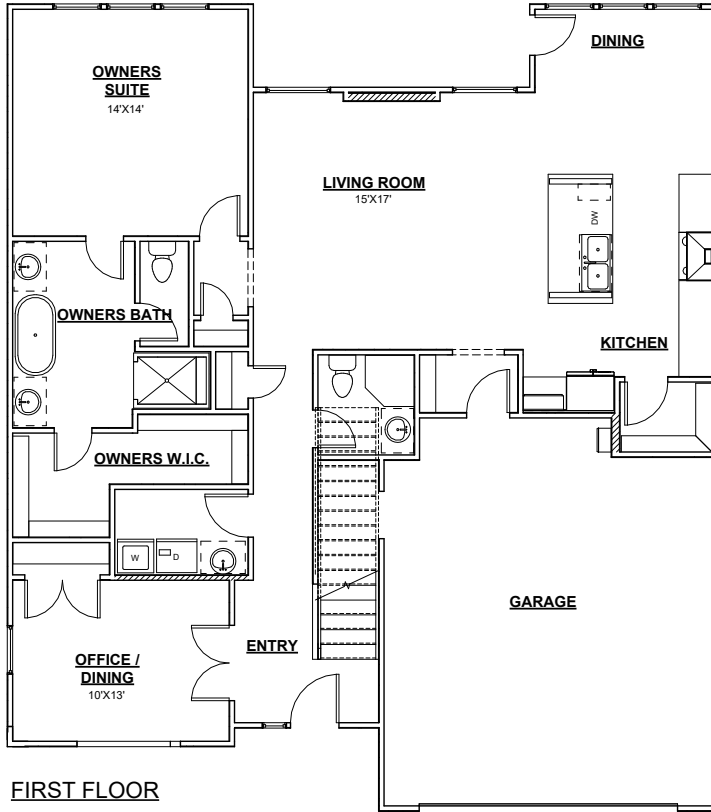


MALIBU

2754 SQFT WIDTH 44'-10" DEPTH 50'-10"
 4 BEDROOM / 4.5 BATHROOMS / OFFICE / 2 CAR GARAGE / OFFICE -
 DINING

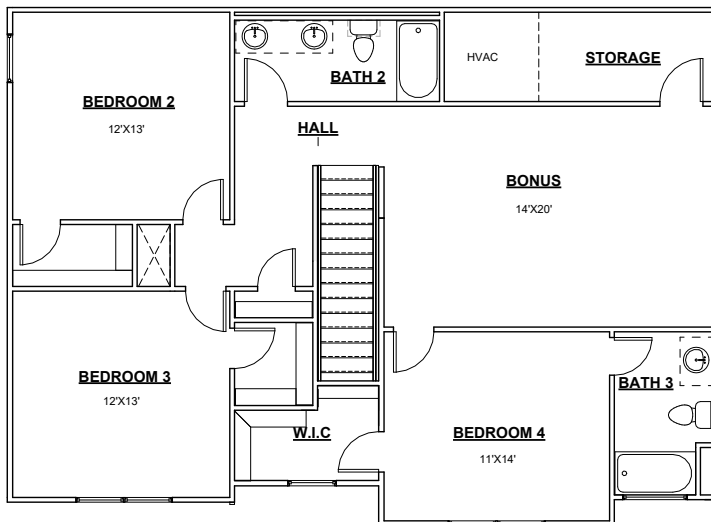
TIMBERCRAFT
HOMES
 405.757.7067



CONTEMPORARY



MODERN



MODERN FARMHOUSE

PERSONALIZATION OPTIONS:
 3RD CAR / 5TH BEDROOM

NOTE: ALL BACK AND SIDE MATERIAL ARE 8" JAMES HARDIE LAP SIDING.
 We reserve the right to make changes or alterations with or without notice due to our continuing efforts to offer our customers the greatest range of selections. Some plans may have obvious differences. Noticeable variations may exist between floor plans. This document is intended as a guide and not as an actual representation of the home features. Room dimensions are rounded. Ask your community manager for further details. Updated May 2023.