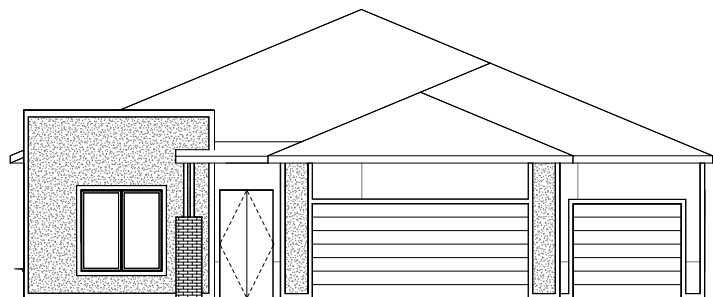


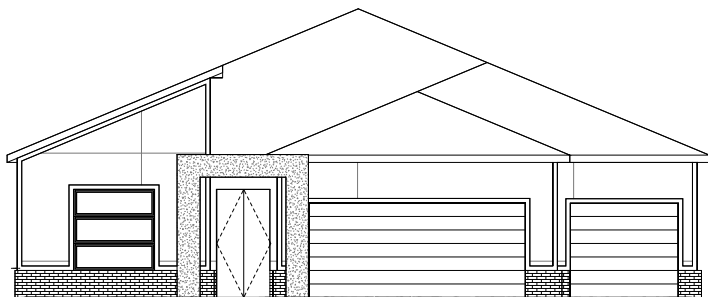
CLEARWATER

ECHO PARK SERIES

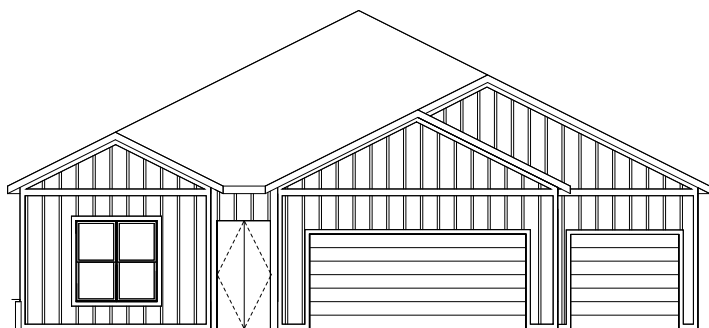
 **TIMBERCRAFT**
HOMES
405.757.7067



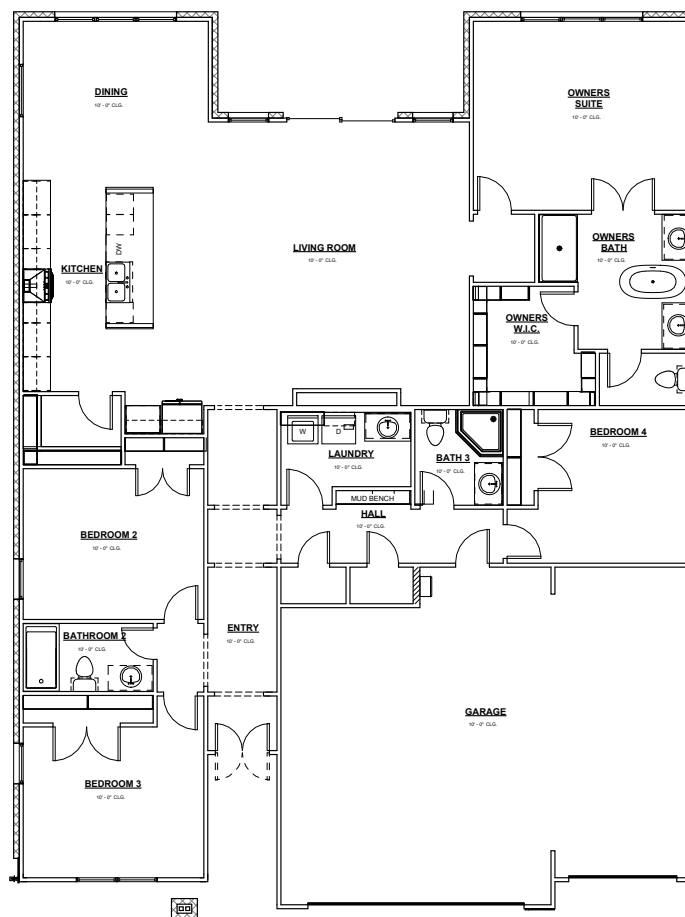
CONTEMPORARY



MODERN



MODERN FARMHOUSE



- 2400 SQFT
- WIDTH 50'-10"
- DEPTH 66'-10"
- 4 BEDROOMS
- 3 BATHROOMS
- 3 CAR
- 10' PLATE HEIGHT FIRST FLOOR

NOTE: HOUSE SIDE MATERIAL BRICK AND / OR 2" JAMES HARDIE LAP SIDING.
We reserve the right to make changes or alterations with or without notice due to our continuing efforts to offer our customers the greatest range of selections. Some plans may have obvious differences. Noticeable variations may exist between floor plans. This document is intended as a guide and not as an actual representation of the home features. Room dimensions are rounded. Ask your community manager for further details. Updated May 2023.