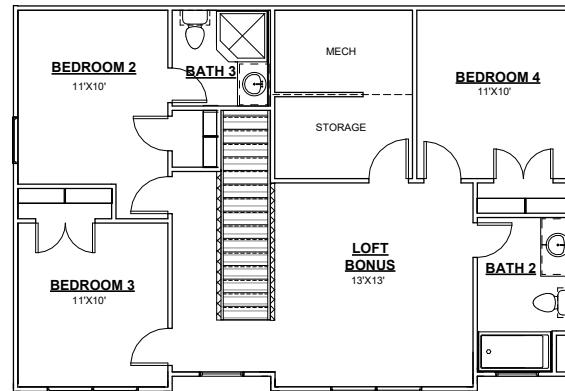
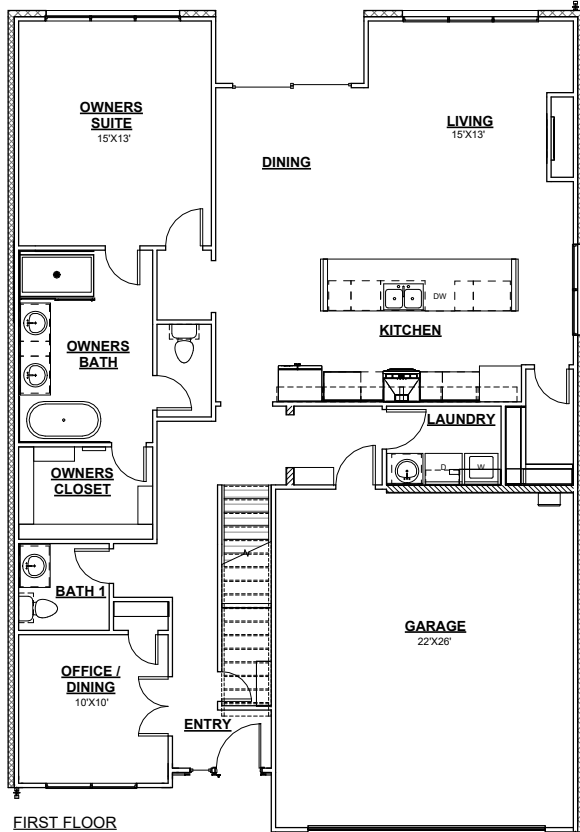


# HUNTINGTON

ECHO PARK SERIES

**TIMBERCRAFT**  
HOMES  
405.757.7067



- 2355 SQFT
- WIDTH 38'-0"
- DEPTH 55'-10"
- 4 BEDROOMS
- 3.5 BATHROOMS
- 2 CAR GARAGE
- OFFICE - DINING
- 10' PLATE HEIGHT FIRST FLOOR
- 9' PLATE HEIGHT SECOND FLOOR

**PERSONALIZATION OPTIONS**

- 3RD CAR
- COFFERED CEILING: LIVING RM OR OWNERS SUITE



CONTEMPORARY



MODERN



MODERN FARMHOUSE

NOTE: HOUSE SIDE MATERIAL BRICK AND / OR 8" JAMES HARDIE LAP SIDING.  
We reserve the right to make changes or alterations with or without notice due to our continuing efforts to offer our customers the greatest range of selections. Some plans may have obvious differences. Noticeable variations may exist between floor plans. This document is intended as a guide and not as an actual representation of the home features. Room dimensions are rounded. Ask your community manager for further details. Updated May 2023.