

FIRST FLOOR



CONTEMPORARY



MODERN

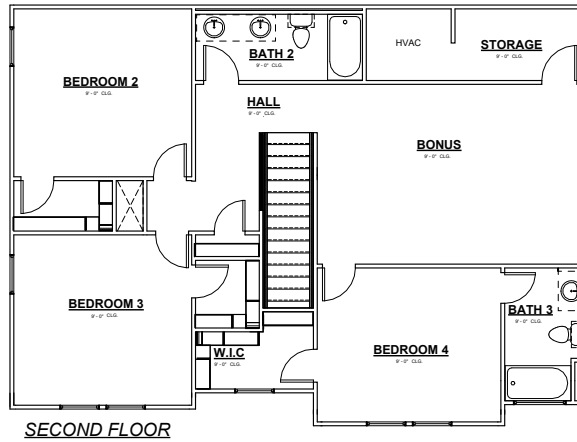


MODERN FARMHOUSE

# MALIBU

ECHO PARK SERIES

**TIMBERCRAFT**  
HOMES  
405.757.7067



- 2754 SQFT
- WIDTH 44'-10"
- DEPTH 50'-10"
- 4 BEDROOMS
- 4 BATHROOMS
- 2 CAR GARAGE
- OFFICE - DINING
- 10' PLATE HEIGHT FIRST FLOOR
- 9' PLATE HEIGHT SECOND FLOOR

**PERSONALIZATION OPTIONS**

- 3RD CAR
- 5TH BEDROOM
- COFFERED CEILING: LIVING RM OR OWNERS SUITE

NOTE: HOUSE SIDE MATERIAL BRICK AND / OR 6" JAMES HARDIE LAP SIDING.  
We reserve the right to make changes or alterations with or without notice due to our continuing efforts to offer our customers the greatest range of selections. Some plans may have obvious differences. Noticeable variations may exist between floor plans. This document is intended as a guide and not as an actual representation of the home features. Room dimensions are rounded. Ask your community manager for further details. Updated May 2023.