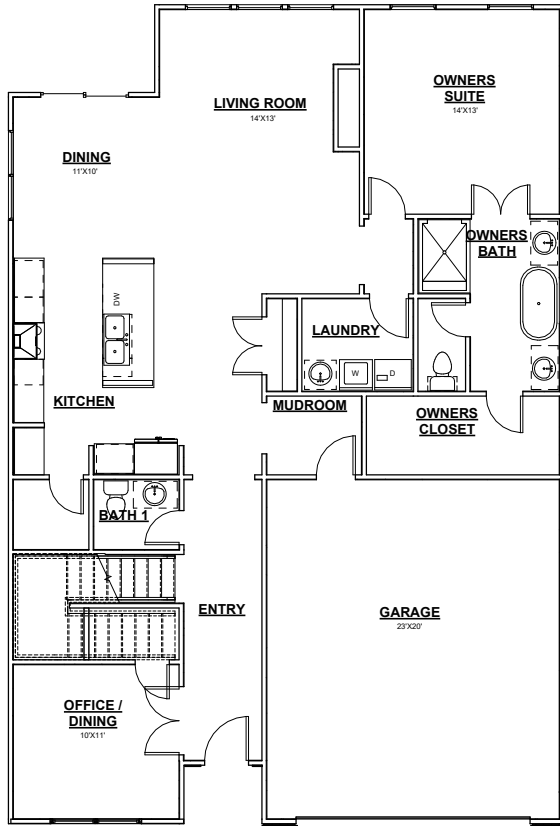


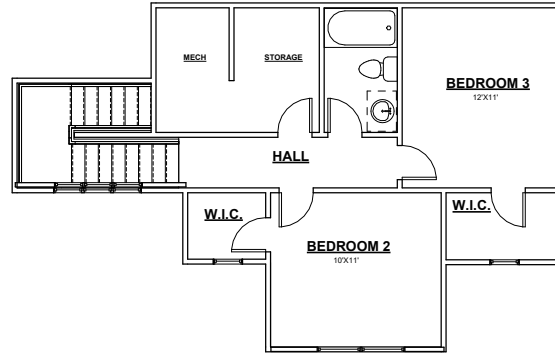
OCEANSIDE

ECHO PARK SERIES

TIMBERCRAFT
HOMES
405.757.7067



FIRST FLOOR



SECOND FLOOR

- 2134 SQFT
- WIDTH 38'-10"
- DEPTH 56'-10"
- 3 BEDROOMS
- 2.5 BATHROOMS
- 2 CAR GARAGE
- OFFICE - DINING
- 10' PLATE HEIGHT FIRST FLOOR
- 9' PLATE HEIGHT SECOND FLOOR

- PERSONALIZATION OPTIONS**
- 3RD CAR
 - CATHEDRAL CEILING: LIVING RM OR OWNERS SUITE
 - COFFERED CEILING: LIVING RM OR OWNERS SUITE



CONTEMPORARY



MODERN



MODERN FARMHOUSE

NOTE: HOUSE SIDE MATERIAL BRICK AND / OR 8" JAMES HARDIE LAP SIDING.
We reserve the right to make changes or alterations with or without notice due to our continuing efforts to offer our customers the greatest range of selections. Some plans may have obvious differences. Noticeable variations may exist between floor plans. This document is intended as a guide and not as an actual representation of the home features. Room dimensions are rounded. Ask your community manager for further details. Updated May 2023.