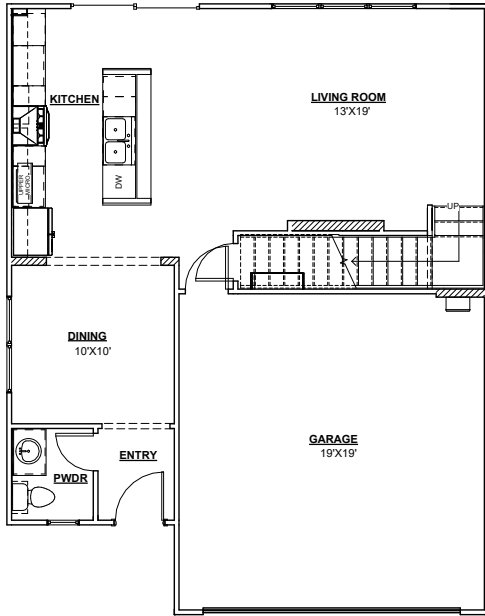


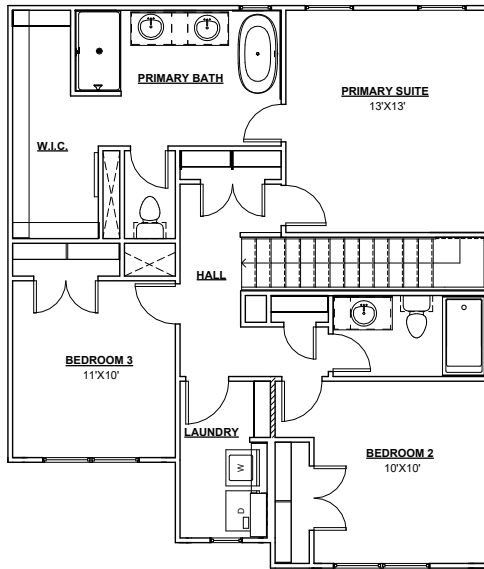
TREMONT

1607 SQFT WIDTH 30'-0" DEPTH 36'-5"
3 BEDROOM / 2.5 BATHROOMS / 2 CAR GARAGE

 **TIMBERCRAFT**
HOMES
405.757.7067



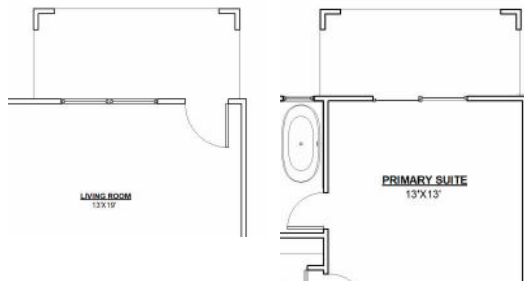
CONTEMPORARY



MODERN

TREMONT BALCONY OPTION

BALCONY OPTION IS ACCESSIBLE FROM THE PRIMARY SUITE AND WILL ALTER PATIO LOCATION ON FIRST FLOOR



MODERN FARMHOUSE

NOTE: HOUSE SIDE MATERIAL BRICK AND / OR 8" JAMES HARDIE LAP SIDING.
We reserve the right to make changes or alterations with or without notice due to our continuing efforts to offer our customers the greatest range of selections. Some plans may have obvious differences. Noticeable variations may exist between floor plans. This document is intended as a guide and not as an actual representation of the home features. Room dimensions are rounded. Ask your community manager for further details. Updated May 2024.