

FIRST FLOOR



CONTEMPORARY



MODERN

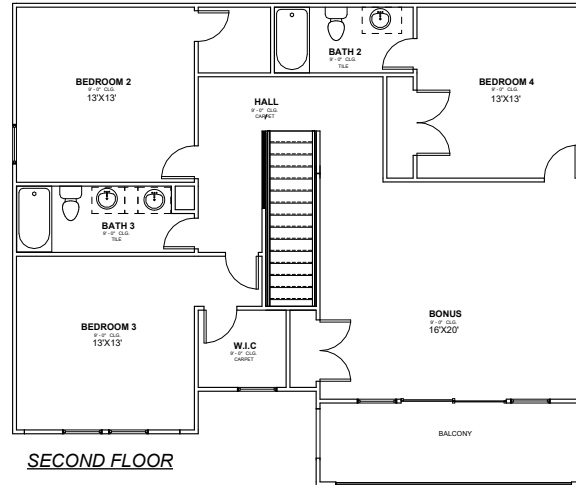


MODERN FARMHOUSE

MALIBU

ECHO PARK SERIES

TIMBERCRAFT
HOMES
405.757.7067



SECOND FLOOR

- 2889 SQFT
- WIDTH 44'-10"
- DEPTH 50'-10"
- 5 BEDROOMS
- 4 BATHROOMS
- 2 CAR GARAGE
- 10' PLATE HEIGHT FIRST FLOOR
- 9' PLATE HEIGHT SECOND FLOOR

PERSONALIZATION OPTIONS

- 3 CAR GARAGE
- DINING ROOM
- COFFERED CEILING: LIVING RM OR PRIMARY SUITE
- PAN CEILING: LIVING RM OR PRIMARY SUITE

NOTE: HOUSE SIDE MATERIAL BRICK AND / OR 6" JAMES HARDIE LAP SIDING.
We reserve the right to make changes or alterations with or without notice due to our continuing efforts to offer our customers the greatest range of selections. Some plans may have obvious differences. Noticeable variations may exist between floor plans. This document is intended as a guide and not as an actual representation of the home features. Room dimensions are rounded. Ask your community manager for further details. Updated May 2023.